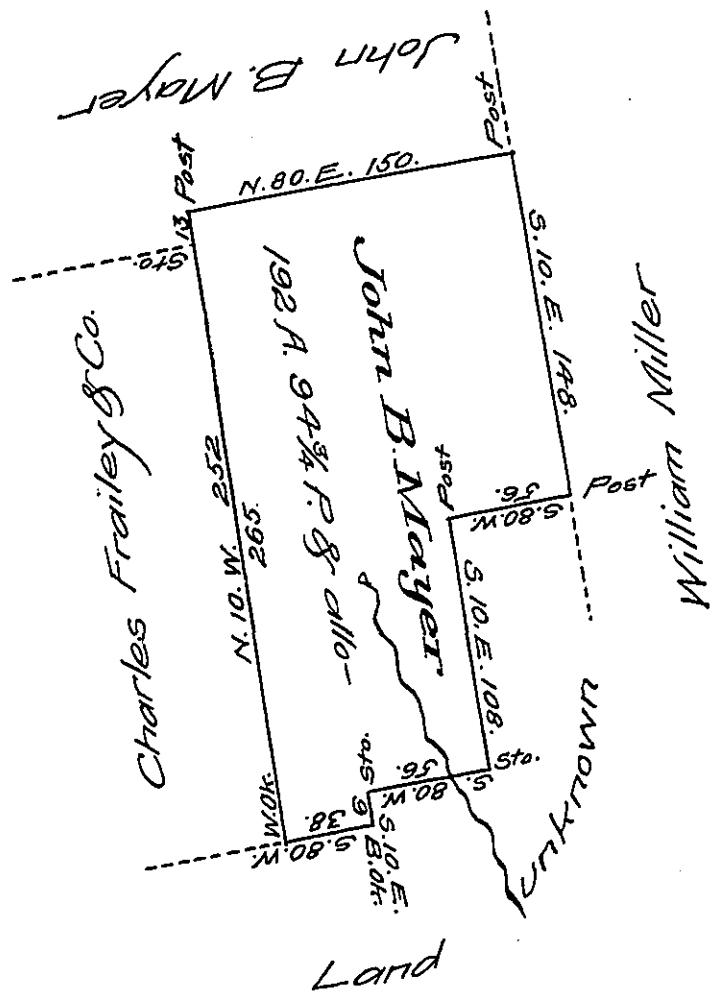


FORM NO. 1.



Situate in Rush Township Schuylkill County Containing  
 192 Acres 94 <sup>3</sup>/<sub>4</sub> Perches and the allowance of six per Cent for  
 Roads Surveyed on the 21st day of April 1830 unto John B. Mayer  
 by Virtue of a Warrant Granted to him dated the 26th day  
 January 1830.

By George Reber D.S.

To Gabriel Hiester Esquire  
 Surveyor General of Pennsylvania.

IN TESTIMONY that the above is a copy of the original remaining on file in  
 the Department of Internal Affairs of Pennsylvania, made  
 conformably to an Act of Assembly approved the 16th day of  
 February, 1833, I have hereunto set my Hand and caused  
 the Seal of said Department to be affixed at Harrisburg,  
 this fourteenth day of February 1908.

*Henry Howell*  
 Secretary of Internal Affairs.